

OFFICE - SINTRA - 354 M2

RENTAL

LOCAL

SINTRA - CABRA FIGA

AREA

354 M2

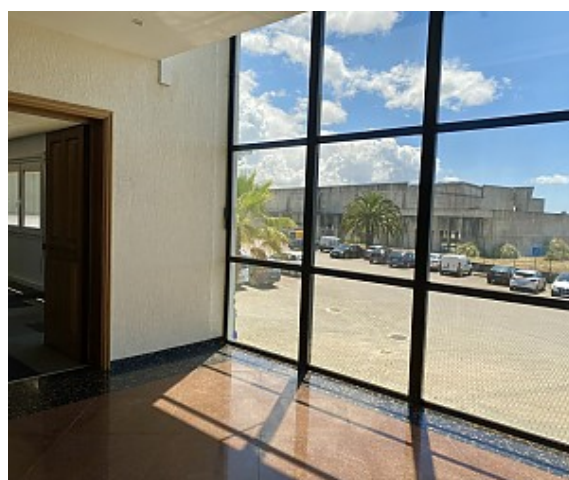
CHARACTERISTICS

- 2 offices that are interconnected (each office with 177 m2)
- Office building located within our Industrial Site "Parque Industrial Meramar II" , Av^a St^a Isabel Edif Escritório (N249-4), 2635-047 Rio de Mouro
- Access to the offices via the stair case - no lift available.
- Private condominium with 365-day/24-hour service
- Private permanent parking spaces - 5 parking spaces per office, i.e. 10 parking spaces for the two office areas together.
- Parking for customers - Our Park Mark Meramar II does also provide for customer parking spaces

Next to Fábrica da Tabaqueira (Philip Morris Intl.)

- Quick access via IC19 - Exit Carcavelos/Albarraque N249
- Quick access via A16 - Axis Cascais - Sintra - North
- Access also possible via A5 Lisboa-Cascais/Exit Carcavalos-ABÓBODA + N249 heading in the direction of Sintra

The total office area (2 parts x 177m2) will only be rented out as one unit.



38° 45' 0" N | 38° 45' 0" E

MORADA

PARQUE INDUSTRIAL MERAMAR II
Edifício de Escritórios, 1º
Avenida Santa Isabel
Cabra Figa
2635-047 Rio de Mouro
Portugal

INFORMAÇÕES

Email: meramar@meramar.pt
Telefone: +351 214 480 560
Fax: +351 214 480 560
Apoio ao cliente: clientes@meramar.pt
www.meramar.pt